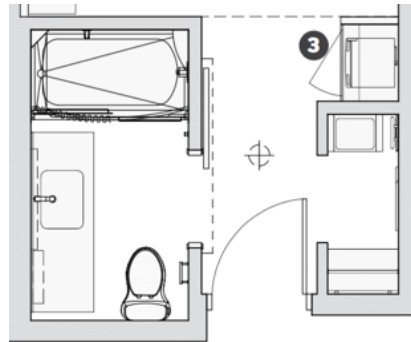
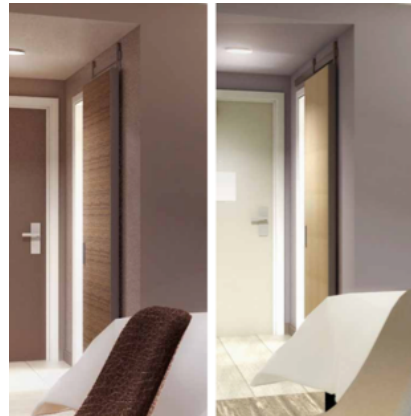


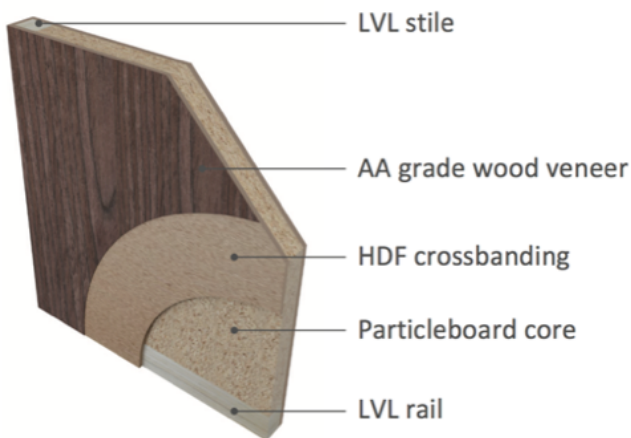
HILTON GARDEN INN

Sliding Barn Door and Hardware Solution



Door Specification

Design:	flush door with stained veneer or HPDL applied
Quality Standard:	WDMA Architectural flush door
Construction:	3 layer engineered construction HDF faces + particle board core + LVL skeleton
Height:	usually 84"
Width:	38 " to 42"
Thickness:	1-3/4"
Door Edge:	veneer edge-banding or stainless steel edge to match sliding hardware
Standard Finish:	Stained veneer prefinished or HPDL
Hardware cut-out:	Available
Barn door Track:	Stainless steel customized top hung barn door hanger with flat track, soft close option available
Pull&Handle:	Stainless steel flush bar handle
Lead time:	8 weeks from approved shop drawings
Warranty:	3 years



Stainless Steel Flat Sliding Track

Forest Bright Advantage

- Made in China but comply with US WDMA architectural flush door quality standard, with competitive price over north american manufacturer.
- 10 years of experience in hospitality industry and other commercial projects, customized service available such as stained color matching, HPDL color matching, CAD drawing preparing and sample door creation for customer approval
- We value the quality of raw material as the essence of good doors. Find beauty both inside and outside of our doors.
- Professional packaging for international business
- Fastest leading time of industry in China
- 3 years warranty

Contact

Abby Zhang 0086 156-3115-3726
Business Development - Hospitality
abby@forestbright.com

Jack Ren 0086 152-9731-5230
Business Development - US Architectural Projects
jack@forestbright.com

Nancy Song 0086 186-3306-5406
Business Development - Sliding Door Solutions
nancy@forestbright.com

Jean Yim 0086 186-3345-8060
Business Development - Global Architectural Projects
jean@forestbright.com